

MORA/Siljan

RNP RWY 34

EGNOS Ch 60007 E 34A

INSTRUMENT
APPROACH
CHART – ICAO

THR ELEV 618 ft, AD ELEV 635 ft

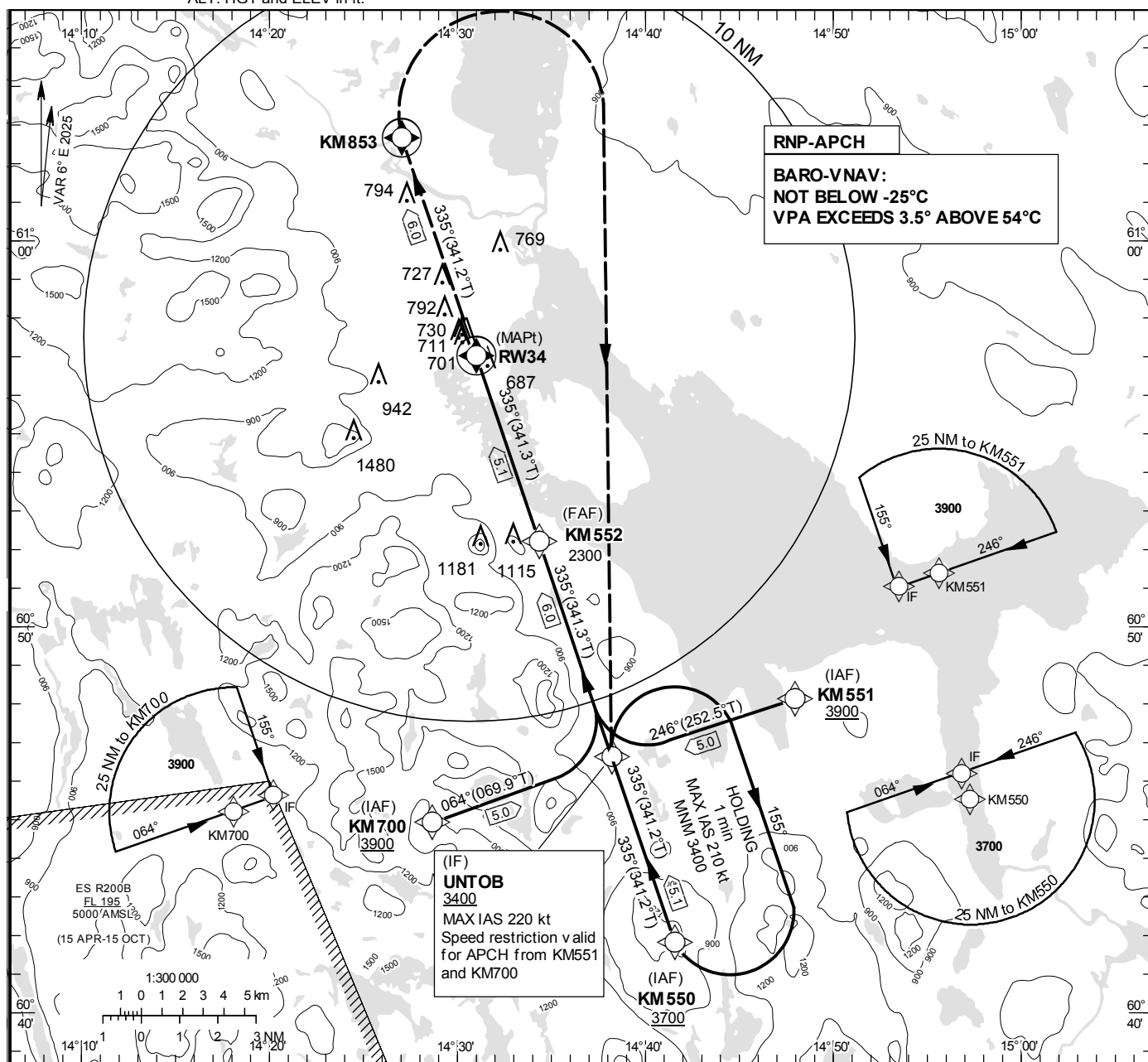
OCH are related to THR.

Circling OCH are related to AD ELEV

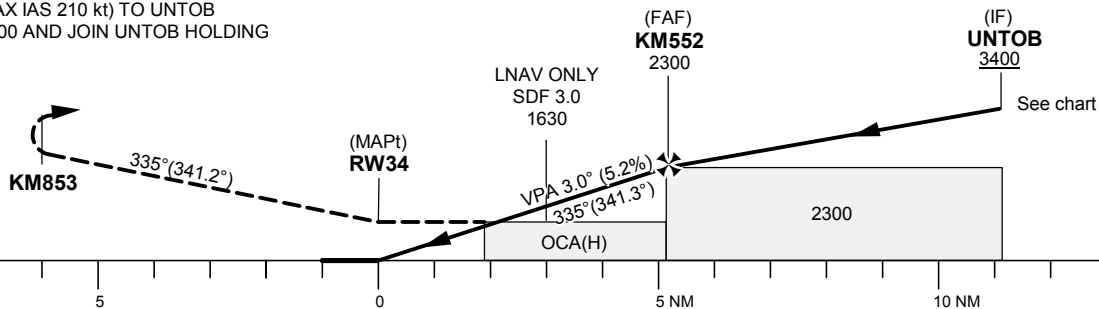
BRG are MAG (True).

ALT, HGT and ELEV in ft.

MORA INFORMATION 119.055



CLIMB TO KM853,
TURN RIGHT (MAX IAS 210 kt) TO UNT0B
CLIMBING TO 3400 AND JOIN UNT0B HOLDING



OCA (H)					Final approach	Distance FAF-MAPt 5.1 NM				
Cat of ACFT	A	B	C	D	Dist to RW34 (NM)	1	2	3	4	5
LPV	860(242)	873(255)	881(263)	891(273)	ALT	990	1300	1620	1940	2260
LNNAV/VNAV	831(213)	843(225)	852(244)	891(273)	GS	kt	80	100	120	140
LNNAV	940(330)				Rate of descent	ft/min	425	530	635	745
Circling	1090(460)	1240(610)	1880(1250)	2210(1580)						
Circling E RWY	1030(400)	1130(500)	1230(600)	1510(880)						

CHANGE: Editorial

MORA/Siljan**RNP RWY 34 via KM550**

Path Desc	Waypoint Identifier	Fly-over	Course °M(°T)	Dist (NM)	Turn Dir	Altitude	Speed	VPA/RDH	Rec Navaid	Navigation Specification
IF	KM550	-	-	-	-	+3700	-	-	-	RNP APCH
TF	UNTOB	-	335°(341.2°)	5.1	-	+3400	-	-	-	RNP APCH

RNP RWY 34 via KM700

Path Desc	Waypoint Identifier	Fly-over	Course °M(°T)	Dist (NM)	Turn Dir	Altitude	Speed	VPA/RDH	Rec Navaid	Navigation Specification
IF	KM700	-	-	-	-	+3900	-	-	-	RNP APCH
TF	UNTOB	-	064°(069.9°)	5.0	-	+3400	-220	-	-	RNP APCH

RNP RWY 34 via KM551

Path Desc	Waypoint Identifier	Fly-over	Course °M(°T)	Dist (NM)	Turn Dir	Altitude	Speed	VPA/RDH	Rec Navaid	Navigation Specification
IF	KM551	-	-	-	-	+3900	-	-	-	RNP APCH
TF	UNTOB	-	246°(252.5°)	5.0	-	+3400	-220	-	-	RNP APCH

Path Desc	Waypoint Identifier	Fly-over	Course °M(°T)	Dist (NM)	Turn Dir	Altitude	Speed	VPA/RDH	Rec Navaid	Navigation Specification
IF	UNTOB	-	-	-	-	+3400	-	-	-	RNP APCH
TF	KM552	-	335°(341.3°)	6.0	-	+2300	-	-	-	RNP APCH
TF	RW34	Y	335°(341.3°)	5.1	-	@668	-	-3.0/50	-	RNP APCH
TF	KM853	Y	335°(341.2°)	6.0	-	-	-	-	-	RNP APCH
DF	UNTOB	Y	-	-	R	+3400	-210	-	-	RNP APCH

Path Desc	Waypoint Identifier	Fly-over	Course °M(°T)	Dist (NM)	Turn Dir	Altitude	Speed	VPA/RDH	Rec Navaid	Navigation Specification
HM	UNTOB	Y	335°(341.2°)	-	R	+3400	-210	-	-	RNAV 1

FAS Data Block

RNP RWY 34

Input data

Operation Type	0
SBAS Provider	1 (EGNOS)
Airport Identifier	ESKM
Runway	34
Runway Letter	0 (None)
Approach PerformanceDesignator	0
Route Indicator	
ReferencePath Data Selector	0
ReferencePathIdentifier	E34A
LTP/FTP Latitude	605700.7165N
LTP/FTP Longitude	0143100.3705E
LTP/FTP Ellipsoidal Height (metres)	219.4
FPAP Latitude	605756.2105N
Delta FPAP Latitude (seconds)	55.4940
FPAP Longitude	0143021.5680E
Delta FPAP Longitude (seconds)	-38.8025
ThresholdCrossingHeight	50.0
TCH UnitsSelector	0 (feet)
GlidepathAngle (degrees)	3.00
Course Width (metres)	105.00
Length Offset (metres)	0
HAL (metres)	40.0
VAL (metres)	50.0

Output data

Data Block	10 0D 0B 13 05 22 00 00 01 34 33 05 59 30 28 1A 25 DC 3A 06 92 1C 8C B1 01 DB D0 FE F4 01 2C 01 64 00 C8 FA E5 F3 E9 1F
Calculated CRC Value	E5F3E91F

RequiredAdditional Data

ICAO Code	ES
LTP/FTP Orthometric Height (metres)	188.3